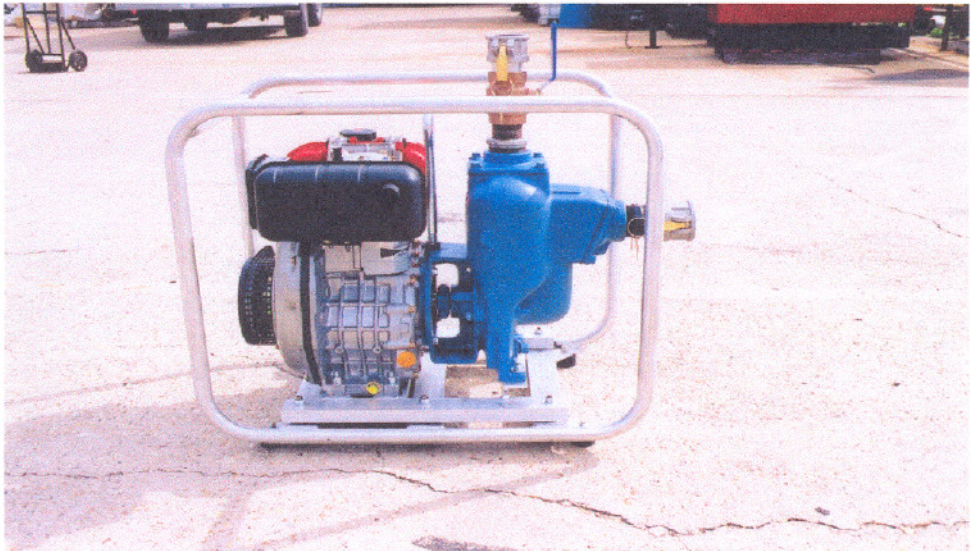
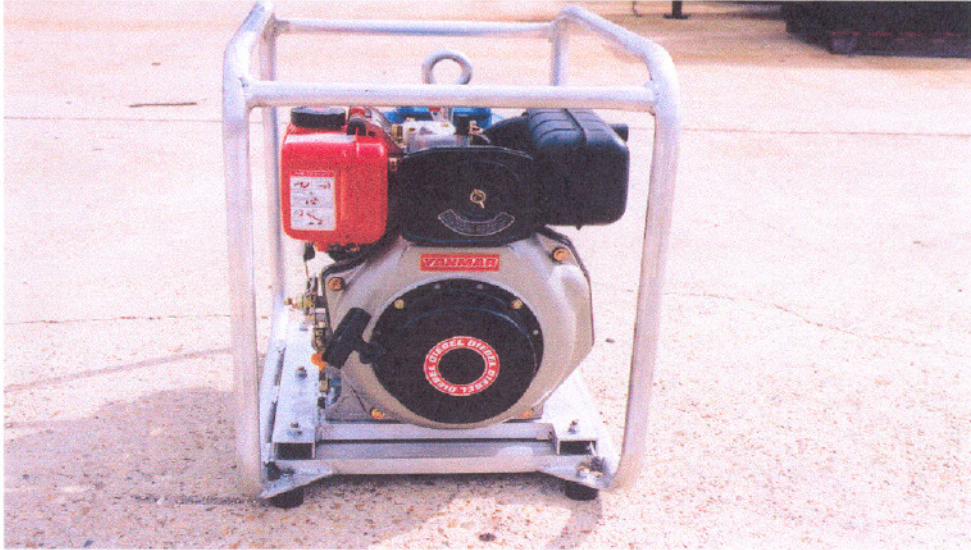


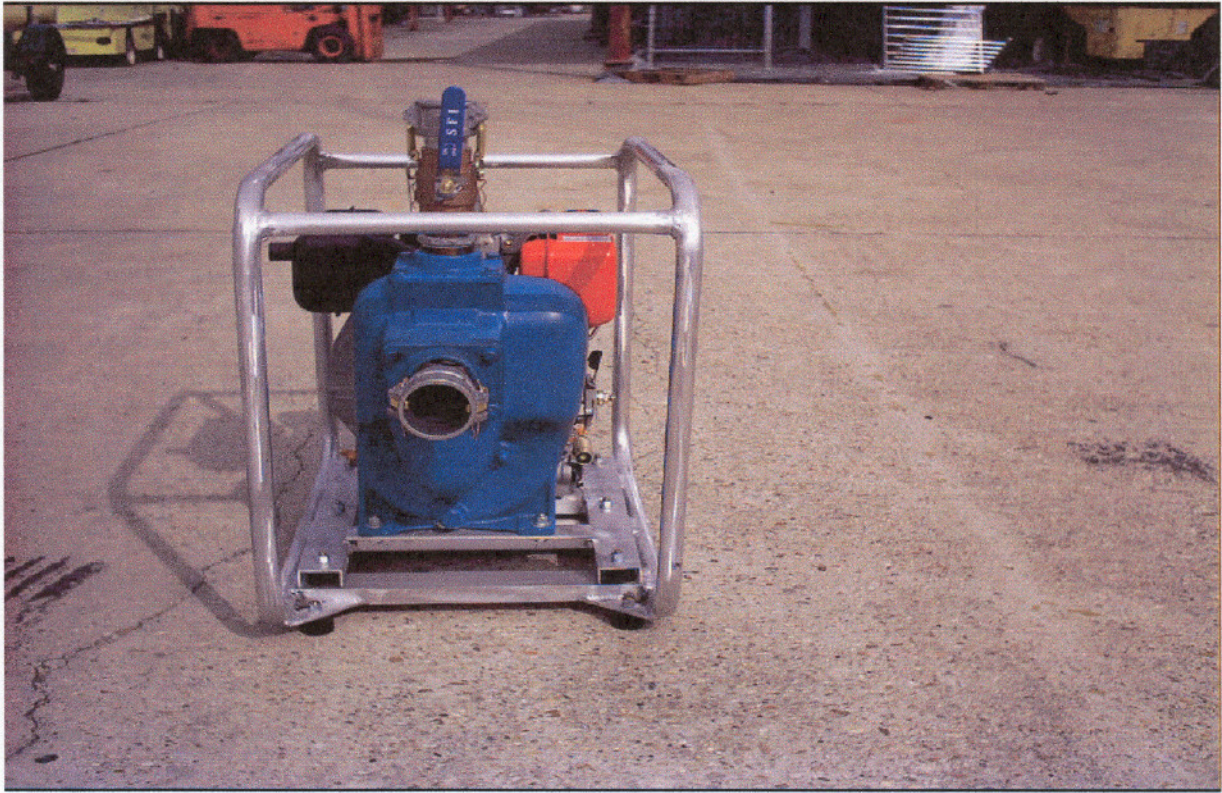
AIP-210 - 2" HIGH PRESSURE SELF PRIMING CENTRIFUGAL PUMP PACKAGE



MANUFACTURED BY PATHMAKER AIRBOATS, INC. FOR SEISMIC INDUSTRY
202 SANDRA STREET, BERWICK, LA 70342 U.S.A.

PHONE: (985) 384-7531 FAX: (985) 384-7502 E-MAIL: airboat@petronet.net

www.airboat-transportation.com



The Model is our AIP-210 powered by a L70 Yanmar diesel (6.7 H.P.) engine.

Please review the following specifications:

Package Weight

- ❖ 145 lbs

Pump

- ❖ Pump dead heads at 137 feet with 59.31 psi
- ❖ Flow at 100 feet or 49.29 psi is 100 gallons per minute
- ❖ Pump and impeller are of cast iron construction with steel wear plate (stainless steel wear plate is optional)
- ❖ Impeller is 6" diameter
- ❖ Seal is rough service type

Engine

- ❖ Yanmar L70 diesel 6.7 H.P. @ 3600 rpm with 1" keyed shaft

Protective Skid

- ❖ Unit is mounted to a 1" (1/8" .125 wall) tubular aluminum protective cage; with engine and pump mounted with rubber shock mounts to cage.

Pricing

- ❖ Dependent on quantity ordered

Please take into consideration the curves were done with a **5 H.P.** motor. When we put the L70 engine to pump the psi went from **59.31** to **63.56** if you compare this package to the Gorman/Rupp package currently available; you will see not only greater performance in every area; but is **20 pounds lighter; costs of parts are approximately 30% less**; our cage will not rust and our engine and pump is shock mounted. This pump is easier to disassemble than the Gorman/Rupp. It takes less than 15 minutes to change seal or impeller in our new pump package.

We can also supply all hose and fittings needed.

Pump shown in photos is a 2" x 2" with quick disconnects and full bore ball valve.

Pump is also available in 3" with 10 horse power diesel with same performance curves.

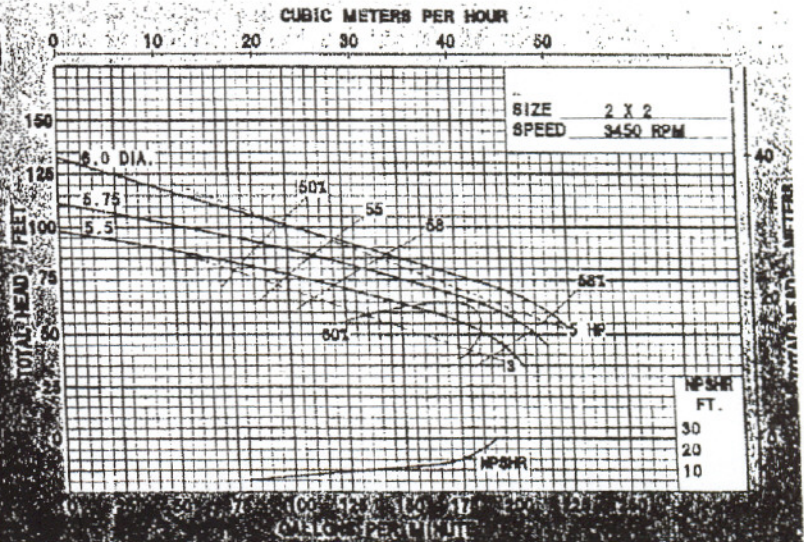
Features & Options

- 2" X 2" SELF PRIMING CENTRIFUGAL PUMP
- CLOSE COUPLED TO ELECTRIC MOTOR
- PUMPAK ONLY TO MOUNT TO STANDARD NEMA "C" FACE MOTOR 5HP, 7.5HP
- FLOWS TO 210 GPM
- PRESSURES TO 130 FEET HEAD
- AVAILABLE IN: CAST IRON, BRONZE OR ALUMINUM CONSTRUCTION
- WITH OR WITHOUT ELECTRIC MOTOR
- IMPELLER—CAST IRON, BRONZE, ALUMINUM OR STAINLESS STEEL
- SHAFT SLEEVE—STAINLESS STEEL
- FASTENERS—STAINLESS STEEL
- SEALS—STANDARD VITON, OPTIONAL SEALS AVAILABLE (CONSULT FACTORY)
- OPTIONS: —ENGINE DRIVES
—PEDESTAL MODELS
—HYDRAULIC DRIVES
—CLUTCHPAKS

DIMENSIONS

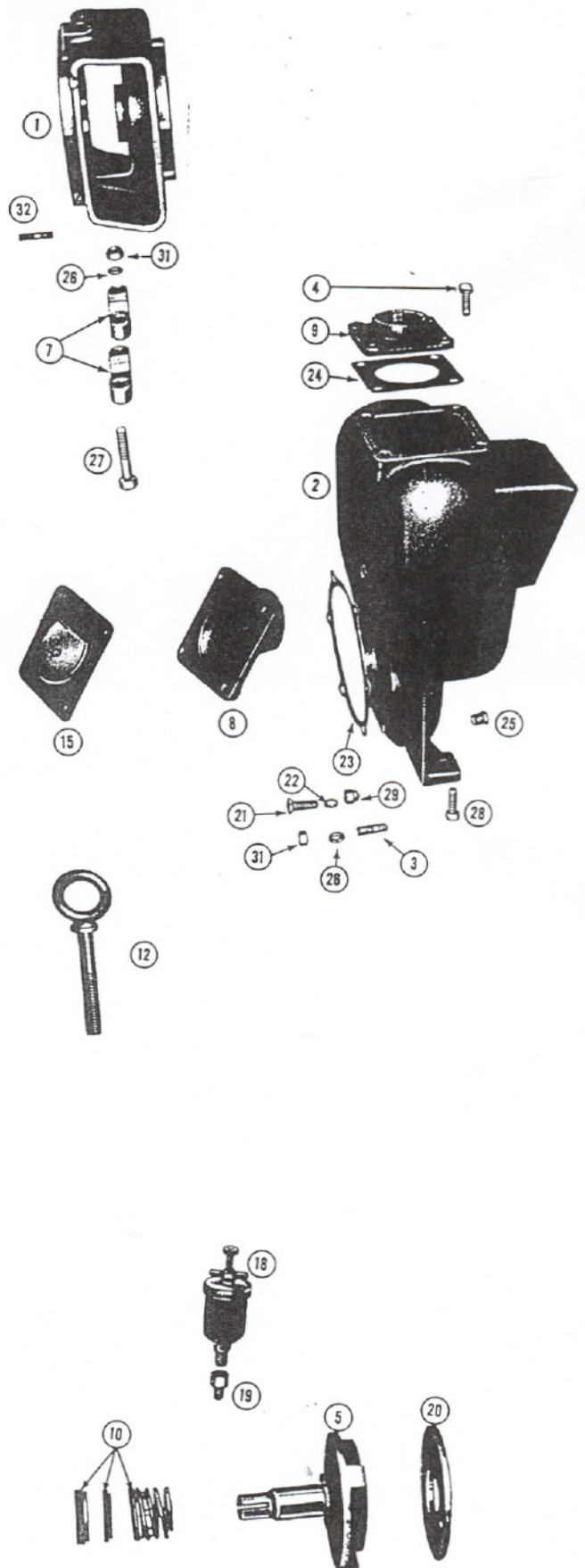


Pump Performance Curves



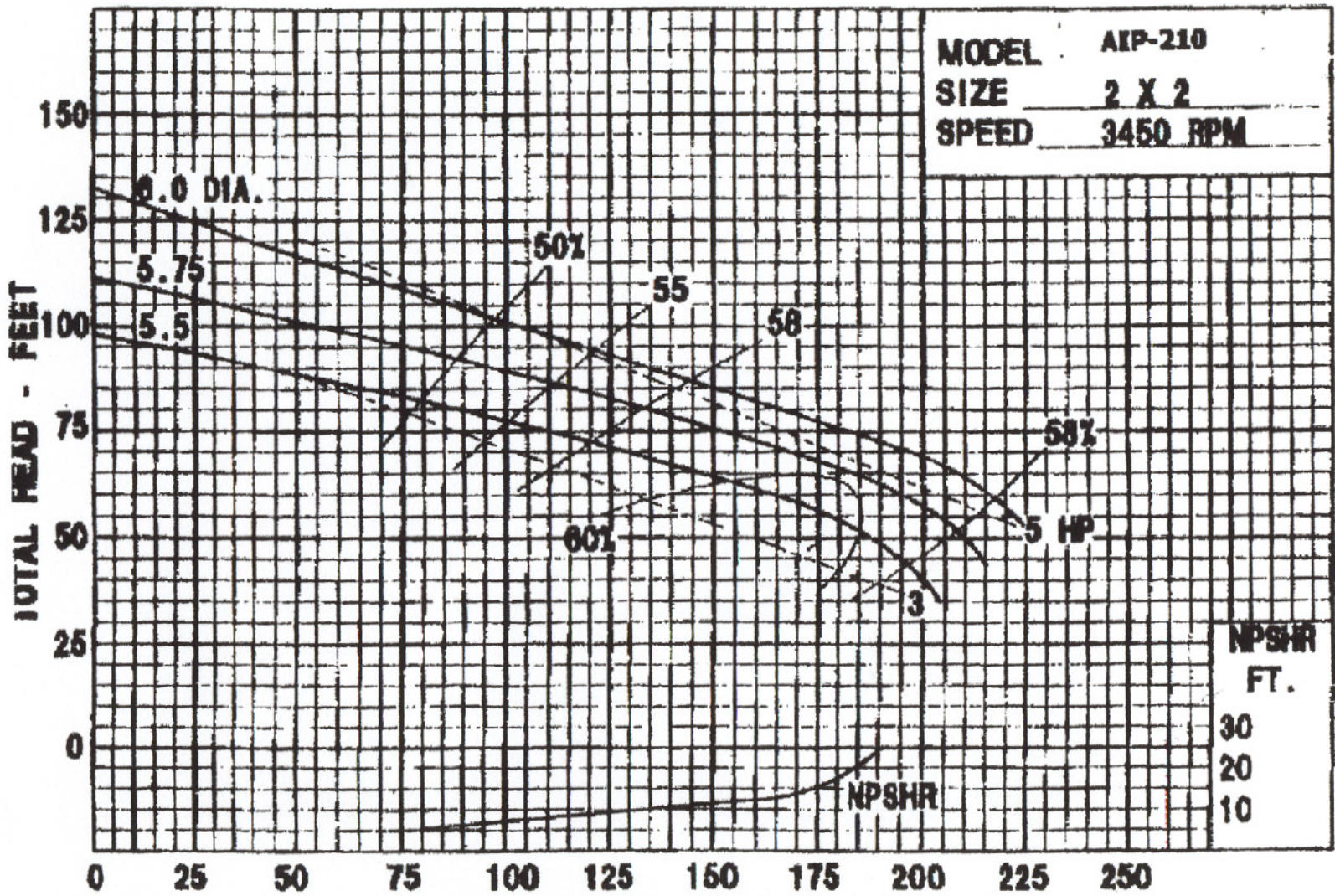
AIP-210 PUMP END - 2" PIPE SIZE

Item	Part #	Description
1	3025	Housing Assembly
2	3035	Housing - Cast Iron
3	1260	Stud-S.S. - Adaptor to Housing - 3/8"
4	1291	Cap Screw S.S. - 3/8"
n/s	2379	Pipe Plug - Cast Iron - 1" NPT
25	1267	Drain Plug - 1/4" NPT
31	1268	Hex Nut - S.S. - 3/8" 2 - Frame to Housing 6 - Adaptor to Housing 4 - Inlet Flange 4 - Outlet Flange
26	1266	Lockwasher - S.S. - 3/8" 2 - Frame to Housing 6 - Adaptor to Housing 4 - Inlet Flange 4 - Outlet Flange
15	3040	Flapper Assembly
23	2240	Gasket - Housing to Adaptor
24	2358	Gasket - Outlet Flange
		Flange
8	2369	Flange - Inlet - Cast Iron - 2"
9	2372	Flange - Outlet - Cast Iron - 2"
		Wear Plate
20	2376	Wear Plate Steel
21	1262	Flat Head Screw - S.S. - 3/8"
22	1271	Annular Gasket - 5/8"
		Impeller
5	3038	Impeller Assembly - Cast Iron
29	1263	Acorn Nut
		Clamp
7	3039	Impeller Clamp Assembly - Clamp
26	1266	Lockwasher - S.S. - 3/8"
27	1269	Capscrew - S.S. - 3/8"
31	1268	Hex Nut - S.S. - 3/8"
		Seal
10	6461	Seal Assembly - Self-lubricated
		Adaptor
1	2346	Adaptor - Cast Iron
32	1261	Stud - S.S. - Engine to Adaptor - 3/8"
31	1268	Hex Nut - S.S. - 3/8"
26	1266	Lockwasher - S.S. - 3/8"
12	2460	Lifting Eye
n/s	2461	Hex Nut - Steel - 5/8"
		Base
27	1274	Capscrew - S.S. - Housing to Base - 3/8"



CUBIC METERS PER HOUR

0 10 20 30 40 50



GALLONS PER MINUTE